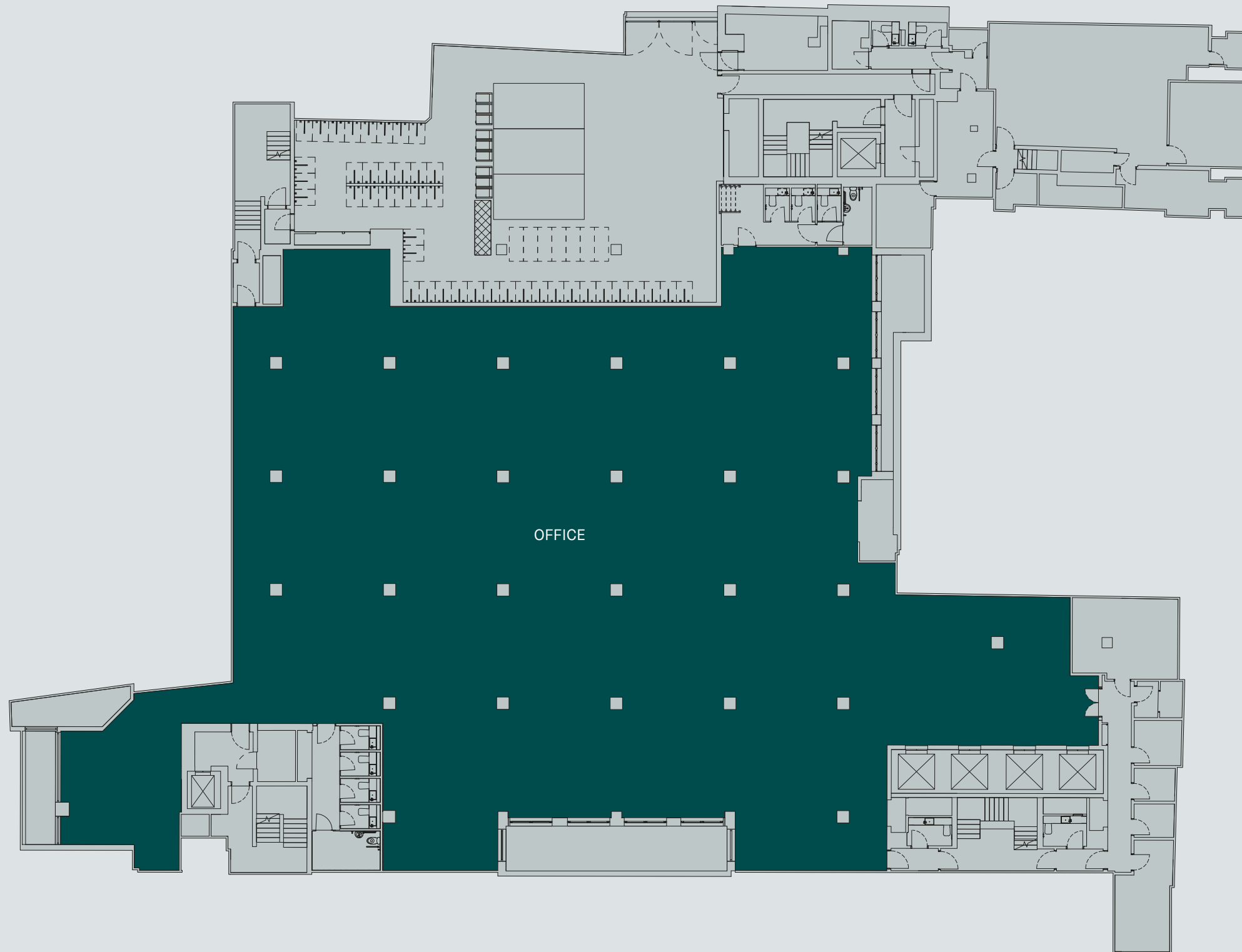


# LOWER GROUND

OFFICE

11,781 SQ FT

1,095 SQ M

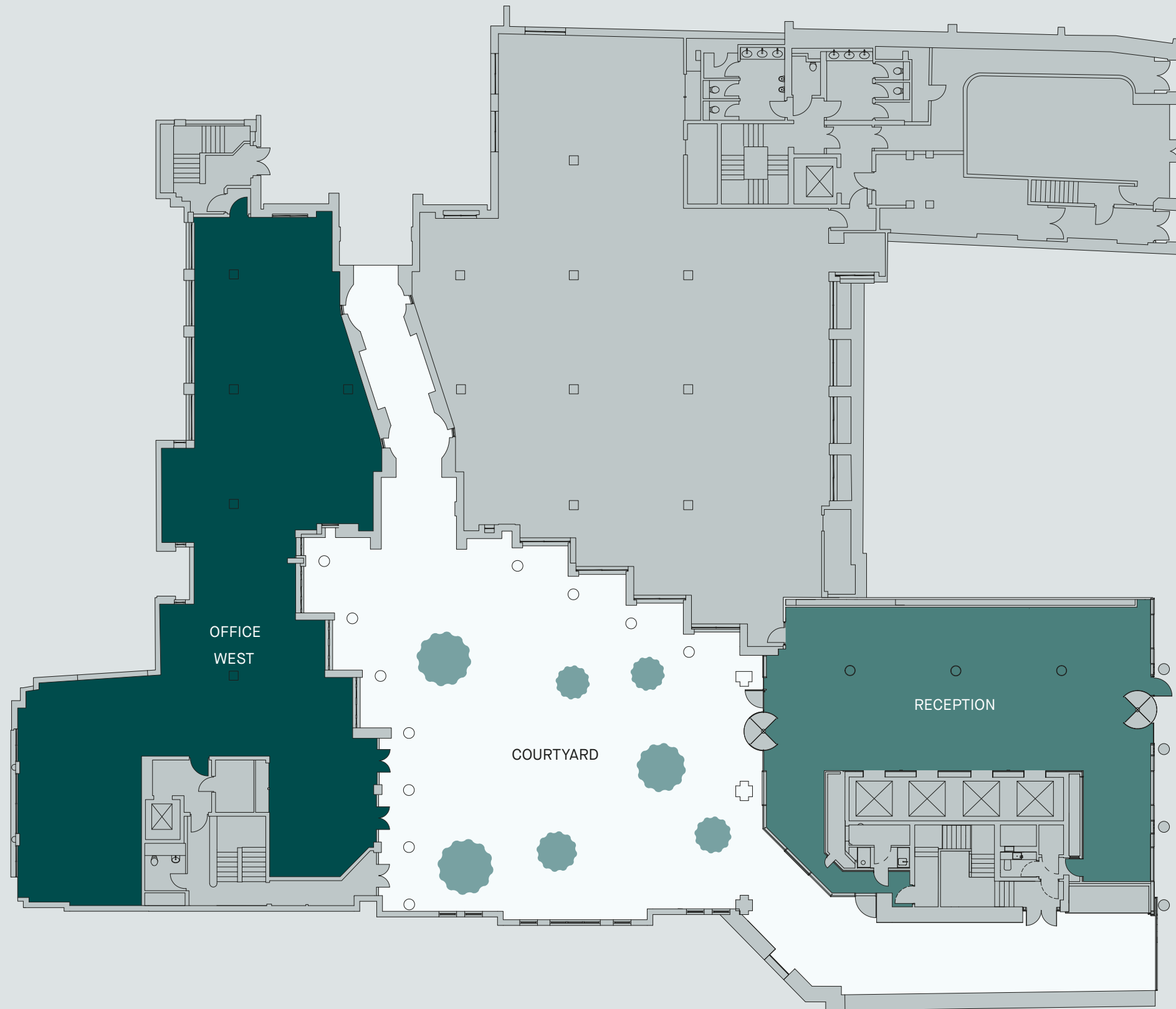


# GROUND

OFFICE

3,911 SQ FT

363 SQ M



# SECOND

OFFICE

15,064 SQ FT

1,399 SQ M

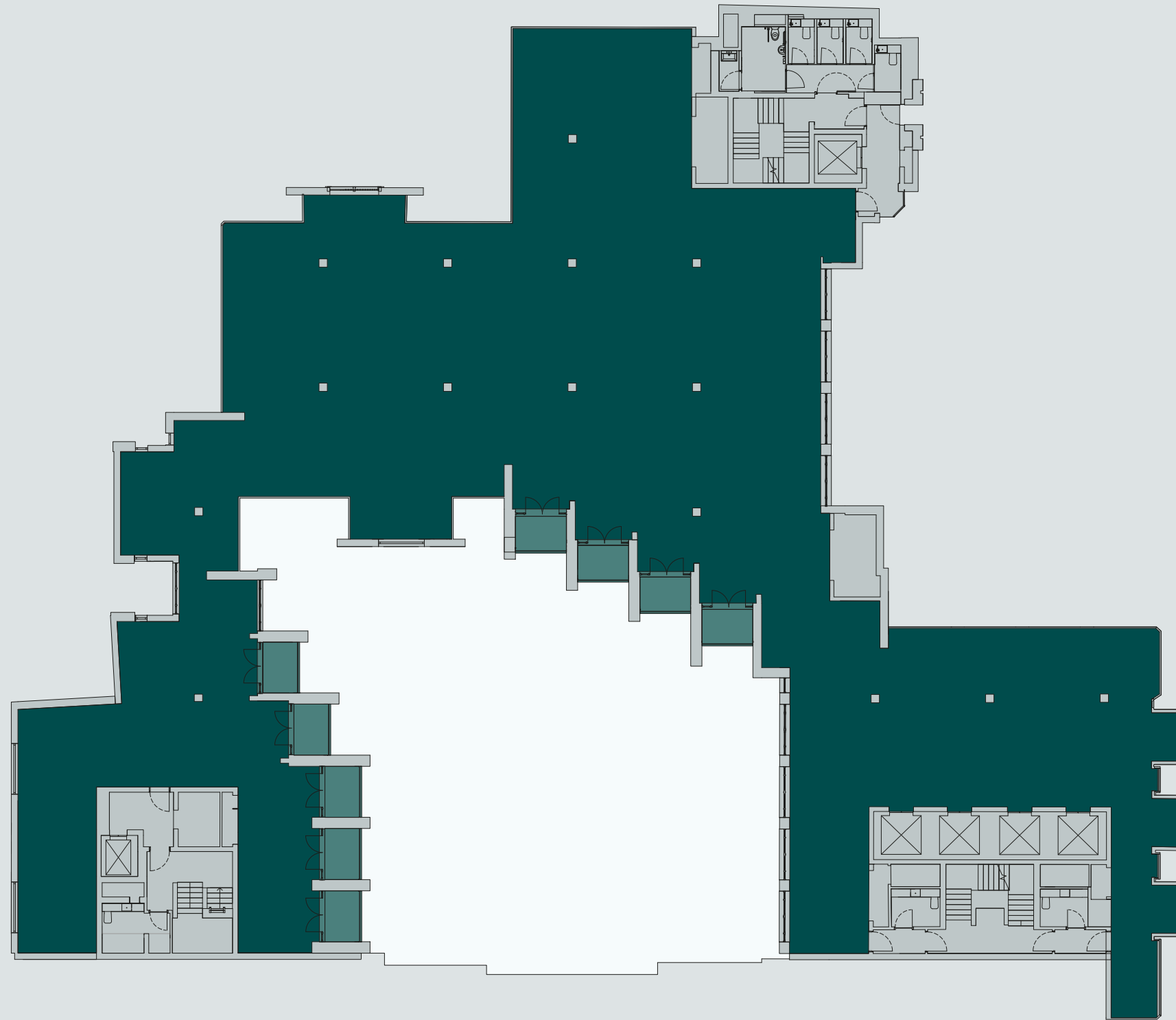


# FIFTH

OFFICE

9,840 SQ FT

914 SQ M

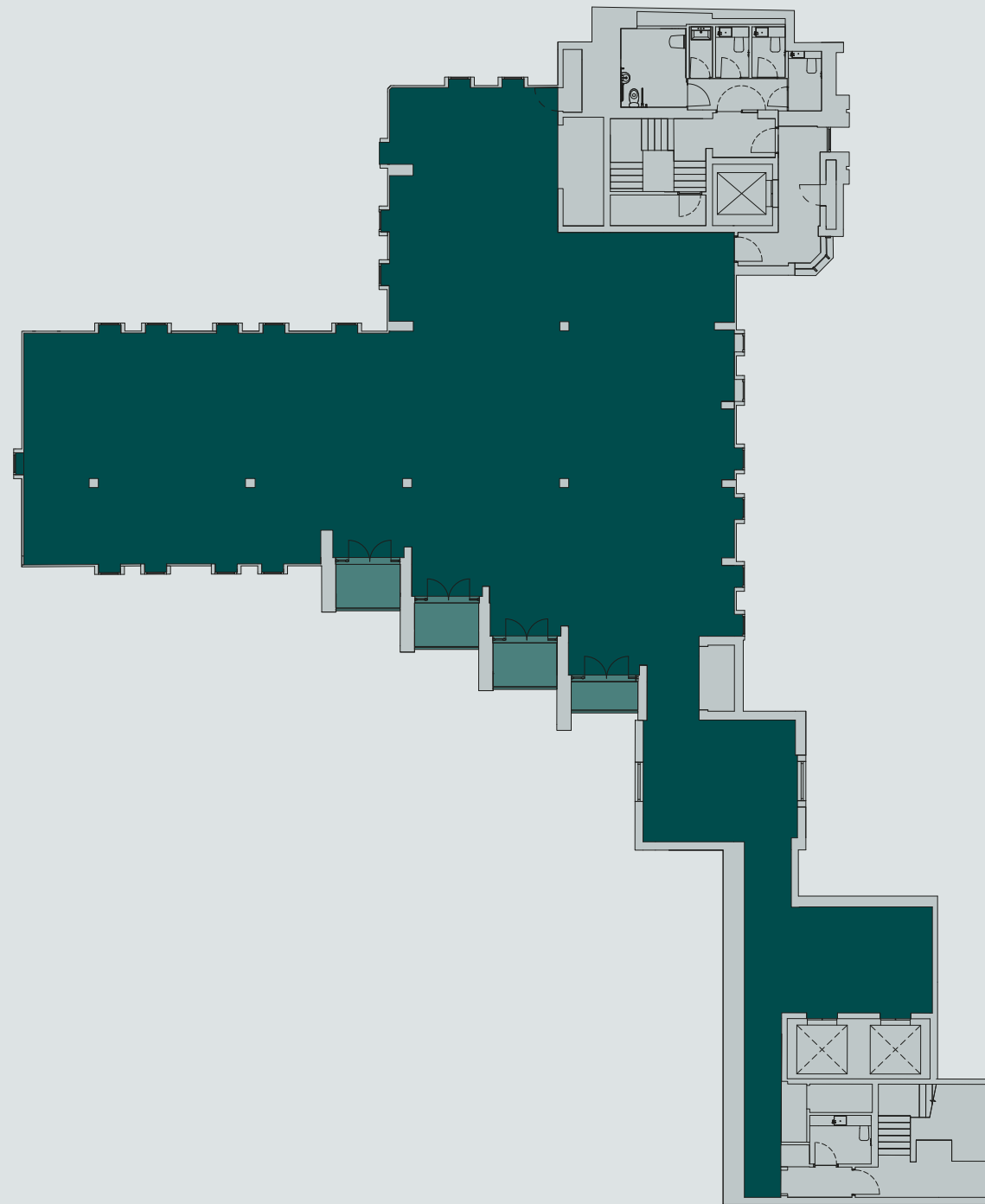


# SIXTH

OFFICE

4,027 SQ FT

374 SQ M



# SPACE PLAN

REFINED

LOWER GROUND

- 98 Desks
- 44 Hot Desks
- 3 Informal Meeting
- 4 Small Meeting Rooms
- 4 Medium Meeting Rooms
- 2 Large Meeting Rooms
- 1 Reception
- 1 Tea Point & Breakout



# SPACE PLAN

REFINED

SECOND

- 136 Desks
- 58 Hot Desks
- 20 Booth & Banquette Seating
- 5 Small Meeting Rooms
- 7 Medium Meeting Rooms
- 5 Large Meeting Rooms
- 1 Reception
- 1 Tea Point & Breakout

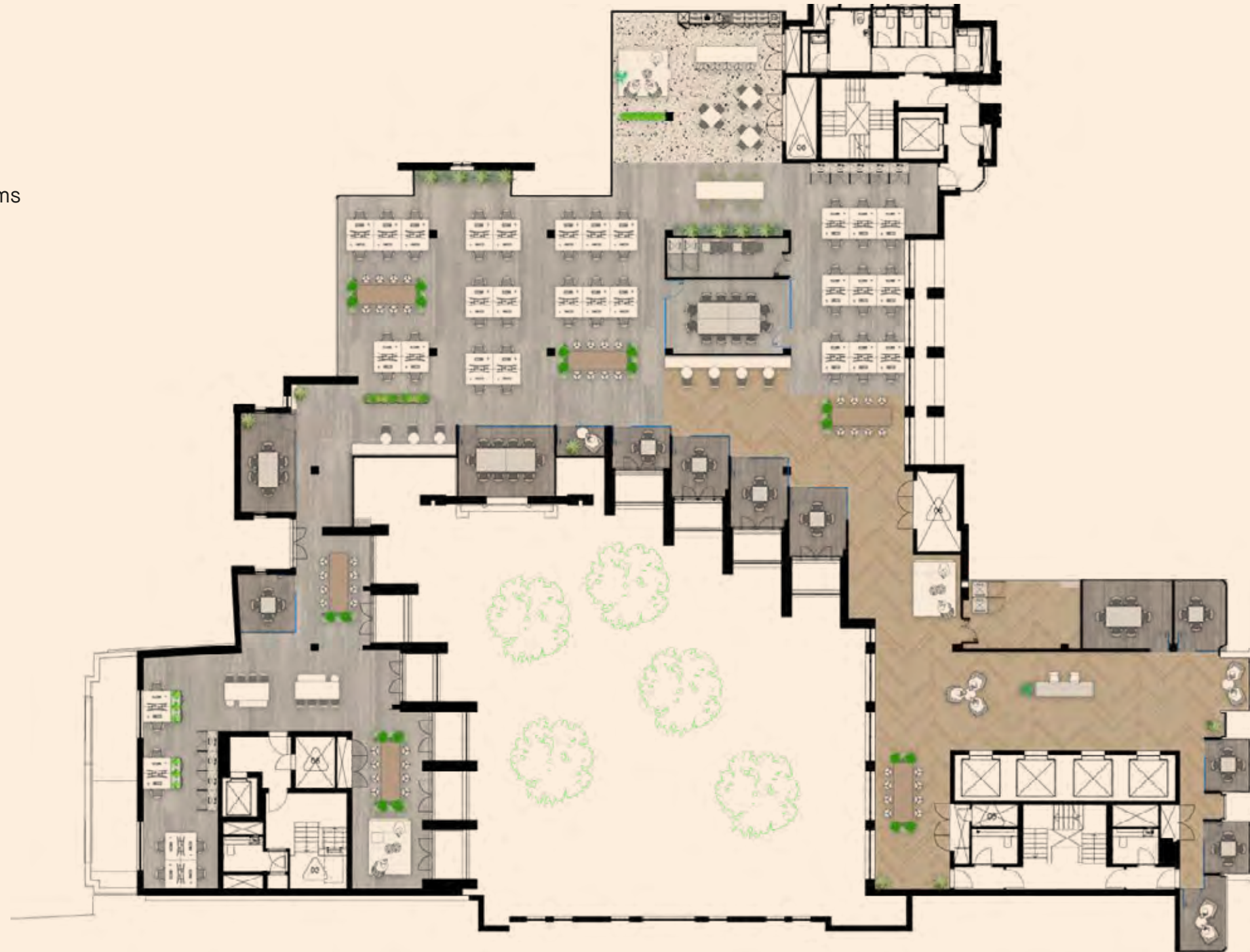


# SPACE PLAN

REFINED

FIFTH

- 60 Desks
- 64 Hot Desks
- 8 Informal Meeting
- 3 Small Meeting Rooms
- 8 Medium Meeting Rooms
- 2 Large Meeting Rooms
- 1 Reception
- 1 Tea Point & Breakout





# SPACE PLAN

REFINED

SIXTH

- 36 Desks
- 24 Hot Desks
- 4 Small / Medium Meeting Rooms
- 1 Large Meeting Rooms
- 1 Reception
- 1 Tea Point & Breakout

